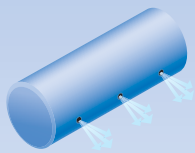


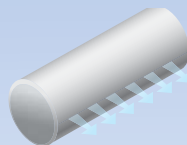
### MODEL

High-Throw



Orifice  
(Standard)

Comfort-Flow



L-Vent

### COLOR OPTIONS



Black



Silver



White



Tan



Green



Blue



Red



Custom  
Colors\*

\* Custom colors available. Requires a premium charge and additional lead time.

Note: Colors may vary. No two dye lots are the exact same color.

### Fabric

TufTex is a heavyweight, premium grade non-permeable polyester fabric. This heavy-duty fabric has a textured, aesthetically-attractive finish. Construction features finished seams, a positive inlet anchoring system with cover-up sleeve, zippered endcaps, and a zippered inlet collar for a DuctSox Final Filter or Adjustable Flow Device. TufTex is machine washable.

### Application

TufTex is ideal for heavy-duty industrial applications, yet aesthetically attractive for commercial and retail environments. Airflow options include standard High-Throw (orifices only) and all Comfort-Flow options. Use where condensation is not an issue.

### Specifications

- Weave: Fire Retardant Polyester  
Plain Weave, Coated
- Weight: 8.2 oz/yd<sup>2</sup>
- Porosity: None
- Codes: Classified by Underwriters Laboratories in accordance with the requirements of:
- NFPA 90A
  - ICC/AC167 (*Acceptance Criteria of Fabric Air Dispersion Products*)
  - UL 2518

